

DAMMON
ENGINEERING, INC.

CHIEF ENGINEER
EMMETT
DAMMON, P.E.

CHIEF ARCHITECT
ROBERT
WILTSE

554 OLD SPANISH TRAIL
SLIDELL, LA, 70458
OFFICE: 985-649-5632
FAX: 985-641-5950

WWW: DAMMONENGINEERING.COM
EMAIL:
DAMMONENG@BELL.SOUTH.NET

ARCHITECTURE
ENGINEERING
STUDIES
PLANNING
INVESTIGATION
EXPERT WITNESS

SLIDELL
ATHLETIC CLUB

BOB THIRSTRUP
OAK SAC PROPERTY, LLC
OAK HARBOR BLVD.
SLIDELL, LA
70458

SECTION C
SCHEDULES

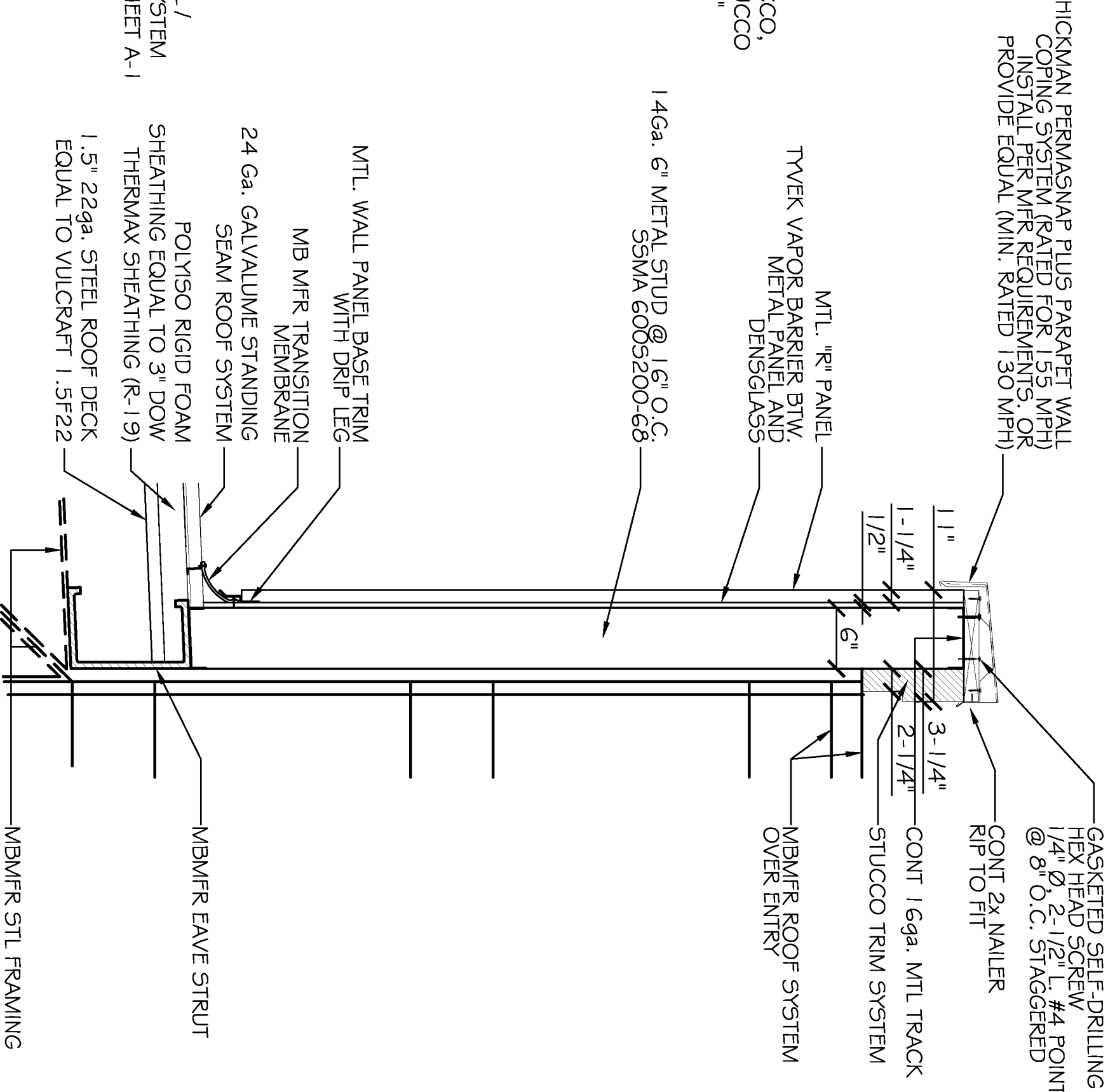
REV: _____

SCALE: AS NOTED

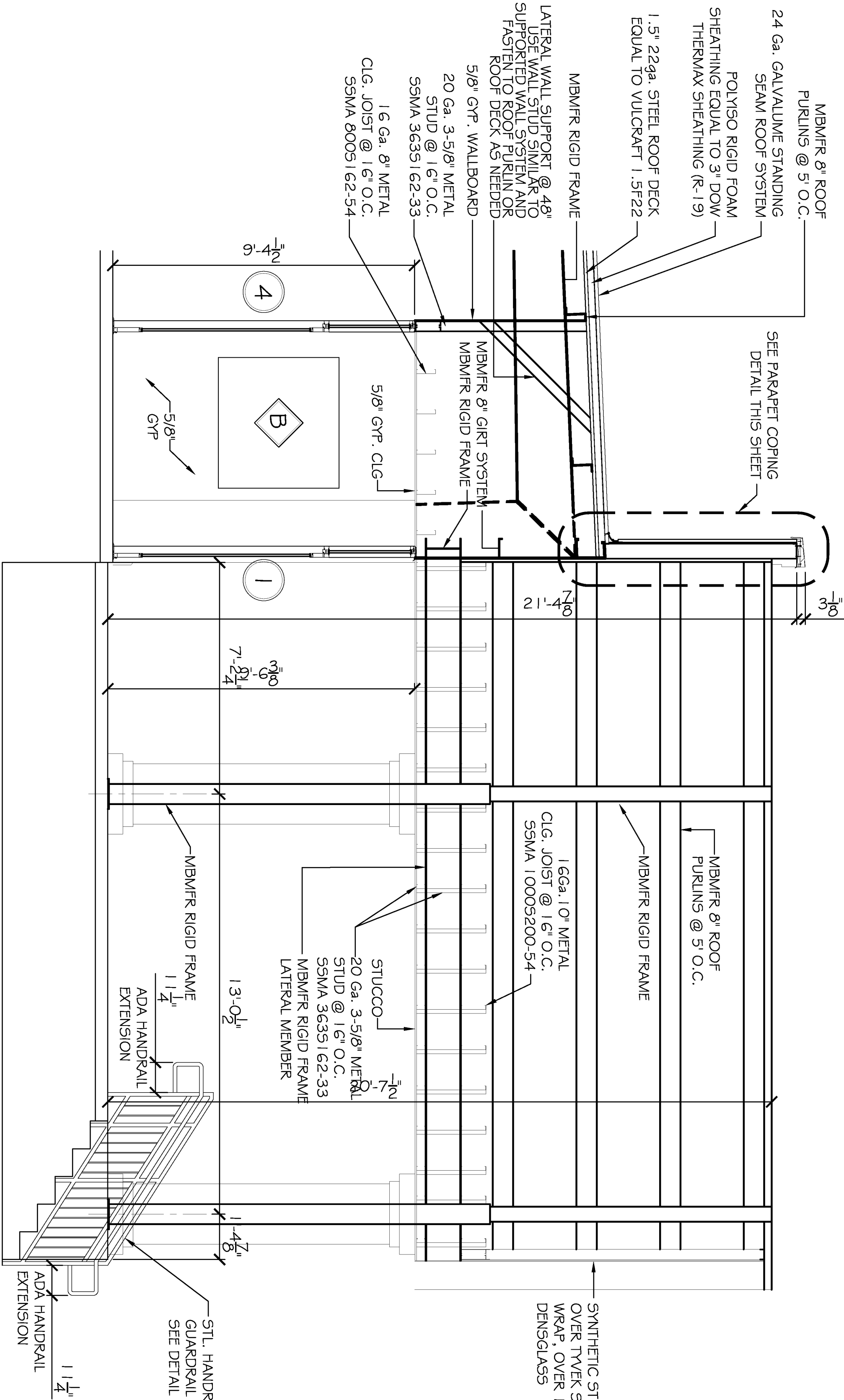
JOB#: 2121

DATE: XX-XX-07

SHEET



PARAPET COPING DETAIL
SCALE: 1"=1'



BUILDING SECTION
SCALE: 3/8\"/>

NOTE: INSTALL SYNTHETIC STUCCO SYSTEM IN ACCORDANCE WITH MANUFACTURERS RECOMMENDATIONS

DOOR & HARDWARE SCHEDULE

MARK	SIZE	DOOR TYPE	FRAME	HDR. NO.	STC	REMARKS
EXTERIOR DOORS						
1	PR. 3/0x7/0	STORE FRONT	TO MATCH DOOR	1	NA	STOREFRONT UNIT. PROVIDE TRANSOM. SEE ELEVATIONS
2	3/0x7/0	STORE FRONT	TO MATCH DOOR	1	NA	STOREFRONT UNIT. PROVIDE TRANSOM. SEE ELEVATIONS
3	3/0x6/8	FLUSH GALV. HOL. MET. STEEL INSUL.	PTD. HOL. MET.	1	NA	GALVANIZING TO BE G90
INTERIOR DOORS						
4	PR. 3/0x7/0	STORE FRONT	TO MATCH DOOR	2	NA	STOREFRONT UNIT TO WINDOW WALL SYSTEM
5	3/0x7/0	STORE FRONT	TO MATCH DOOR	2	NA	STOREFRONT UNIT TO MATCH INTERIOR WINDOW WALL SYSTEM
6	3/0x6/8	FLUSH SOLID CORE WD. MET.	PTD. HOL. MET.	4	NA	STAIN SELECT BY OWNER
7	PR. 3/0x6/8	FLUSH SOLID CORE WD. MET.	PTD. HOL. MET.	4	NA	STAIN SELECT BY OWNER
8	PR. 3/0x6/8	FLUSH SOLID CORE WD. MET.	PTD. HOL. MET.	3	NA	STAIN SELECT BY OWNER
9	3/0x6/8	FLUSH SOLID CORE WD. MET.	PTD. HOL. MET.	3	NA	STAIN SELECT BY OWNER
10	3/0x6/8	FLUSH SOLID CORE WD. MET.	PTD. HOL. MET.	5	NA	STAIN SELECT BY OWNER
11	3/6x7/0	CASED OPENING	NA	NA	NA	

DOOR HARDWARE SCHEDULE:
1. AUTO CLOSER, PAINC BAR, AIR RESISTANT METAL THRESHOLD, WEATHERSTRIP, DOOR STOP, EXTERIOR CYLINDER LOCK (OFF-CENTRANCE), BALL BEARING US320 HINGES.
2. AUTO CLOSER, DOOR STOP, CYLINDER LOCK (OFF-CENTRANCE), BALL BEARING US320 HINGES.
3. PASSAGE LOCK, DOOR STOP, US260 HINGES.
4. KNOB HANDLE (OFF-CENTRANCE), DOOR STOP, US260 HINGES.
5. AUTO CLOSER, DOOR STOP, PAINC LOCK, BALL BEARING US260 HINGES.

WINDOW SCHEDULE

MARK	SIZE	WINDOW TYPE	FRAME	GLASS	UTES	REMARKS
A	OVERALL UNIT SIZE VARIES, SEE PLAN	ALUMINUM STOREFRONT	ALUMINUM 2' x 6'	LOW E		SEE EXTERIOR ELEVATIONS
B	OVERALL UNIT SIZE = 4'-4" NOM. PANE 4'x4'	ALUMINUM STOREFRONT	ALUMINUM 2' x 6'	1/4" CLEAR TEMPERED		INTERIOR WINDOW
C	OVERALL UNIT SIZE = 1'4" NOM. PANE 3'-3 1/2'	ALUMINUM STOREFRONT	ALUMINUM 2' x 6'	LOW E		SEE EXTERIOR ELEVATIONS
D	OVERALL UNIT SIZE VARIES, SEE PLAN	ALUMINUM STOREFRONT @ 42" ABOVE FFE	ALUMINUM 2' x 4'-1/2"	1/4" CLEAR TEMPERED		INTERIOR WINDOW
E	OVERALL UNIT SIZE VARIES, SEE PLAN	ALUMINUM STOREFRONT @ 42" ABOVE FFE	ALUMINUM 2' x 4'-1/2"	1/4" CLEAR TEMPERED		INTERIOR WINDOW
F	2' x 4'	HOLLOW METAL FIXED	HOLLOW METAL	LOW E		
G	PR. SERVICE WINDOW SIZE = 5'-0"x4'-0"	ALUMINUM HORIZ. SLIDE SERVICE WINDOW	ALUMINUM 2' x 4'-1/2"	1/4" CLEAR TEMPERED		
H	SERVICE WINDOW SIZE = 4'-2"x4'	ALUMINUM HORIZ. SLIDE SERVICE WINDOW	ALUMINUM 2' x 4'-1/2"	LOW E		
I	2' x 3'	HOLLOW METAL FIXED	HOLLOW METAL	1/4" CLEAR TEMPERED		ONE-WAY SECURITY WINDOW

WINDOW SCHEDULE NOTES:
I. GLAZING TO BE DBL. GLAZED LAMINATED LOW E.

FINISH SCHEDULE

ROOM NUMBER	ROOM NAME	WALLS	EXTEND WALL TO ROOF DECK CARDINAL DIRECTION	FLOOR	WALL BASE	WAINSCOT	CLG HGT	COMMENTS
100	MAIN FLOOR	5/8" PTD GWB	N/ESW	CRP / VCT	RB	NONE	EX3	-
101	SMOOTHIE STORE	5/8" PTD GWB	N/ESW	VCT	RB	NONE	EX3	-
102	WARNING KITCHEN	FRP / 5/8" GWB	N/ESW	VCT	RB	NONE	CT	10' FRP ON WALL TO Ø
103	MENS TOILET	5/8" PTD GWB	ESW	VCT	RB	NONE	PTD GWB	10'
104	WOMENS TOILET	5/8" PTD GWB	N/EW	VCT	RB	NONE	PTD GWB	10'
105	TRAINERS CHOICE	5/8" PTD GWB	N/ESW	VCT	RB	NONE	EX3	-
106	FREE WEIGHT AREA	5/8" PTD GWB	N/ESW	RT	RB	NONE	EX3	-
107	MENS TOILET	5/8" PTD GWB	N/ES	VCT	RB	NONE	CT	10'
108	SHOWER 1	CRT / 5/8" GWB	N/S	CT	NONE	NONE	PTD GWB	9'
109	SHOWER 2	5/8" PTD GWB	N/S	CT	NONE	NONE	PTD GWB	9'
110	SHOWER 3	5/8" PTD GWB	N/S	CT	NONE	NONE	PTD GWB	9'
111	WOMENS TOILET	5/8" PTD GWB	N/S	VCT	RB	NONE	CT	10'
112	CLOSET	5/8" PTD GWB	N/S	CRP	RB	NONE	PTD GWB	9'
113	OFFICE	5/8" PTD GWB	N/S	CRP	RB	NONE	PTD GWB	9'
114	ELEC./IT	5/8" PTD GWB	N/S	CRP	RB	NONE	PTD GWB	9'
115	CARDIO	5/8" PTD GWB	N/EW	CRP	RB	NONE	EX3	-
116	CHILD CARE	5/8" PTD GWB	N/ESW	CRP	RB	NONE	CT	10'
117	WOMENS TOILET	5/8" PTD GWB	N/ESW	VCT	RB	NONE	PTD GWB	9'
118	MENS TOILET	5/8" PTD GWB	N/ESW	VCT	RB	NONE	PTD GWB	9'
119	OFFICE	5/8" PTD GWB	N/EW	CRP	RB	NONE	CT	10'
120	OFFICE	5/8" PTD GWB	ESW	CRP	RB	NONE	CT	10'
121	PHYSICAL THERAPY	5/8" PTD GWB	N/ESW	CRP	RB	NONE	EX3	-

FINISH SCHEDULE NOTES:
I. ALL FINISH MATERIALS TO BE SELECTED BY OWNER. VERIFY MANUFACTURER, STYLE, AND COLOR, WITH OWNER.